

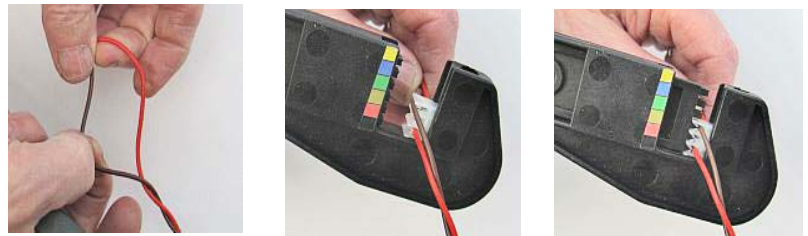
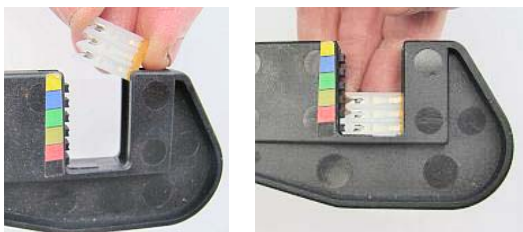
SuperSplice Connector Kits, the easiest way to tap into a circuit.

SuperSplice puts a set of mini sockets onto the host circuit. You connect your wires to the SuperSplice plug and just plug it in.



Putting a 3-way splice socket onto a pair of host wires

Separate the host wires and apply them to the splice socket one-by-one.

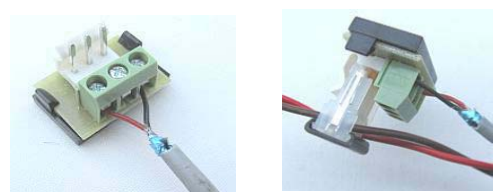


Insert the splice socket into the tool and push it to the bottom

Trigger-pressure pushes the host wires firmly home into the splice to make a gas-tight connection.

Remove the splice socket from the gun and slide the cap into place

Connect your new wires to the SuperSplice plug and plug it in.

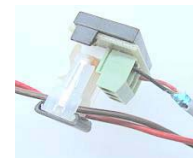


A neat plug is formed

Your new, pluggable connection is made.

Details & Prices

Part number	Description
TV2083	SuperSplice 3-way connector, 10 pack
TV2083-25	SuperSplice 3-way connector, 25 pack
TV2083-25TT	SuperSplice 3 way 25 pack & tool
TV2086	SuperSplice 6-way connector 10 pack
TV2086-25	SuperSplice 6-way connector 25 pack
TV2086-25TT	SuperSplice 6 way 25 pack & tool
TT7052	Supersplice Multi connector tool



TV2086
3-way set, connected



TV2086
6-way splice socket and header

QUALITY SERVICE INNOVATION