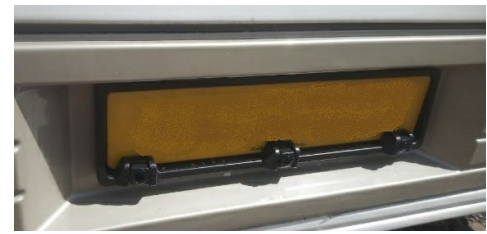


TA1010 EU Licence Plate Reversing Sensor Bar Fitting Guide



Thank you for choosing our high quality parking sensor with wireless Dashboard monitor.

This product is only an auxiliary warning device and is not directly involved in the reversing control.

When fitting the sensors into the number plate shroud, look at the back of the sensor for the up arrow to fit the sensors in the correct orientation.

Each sensor has 2.5m of cable to run to the control module, drill a hole behind the number plate to run the cables to an appropriate spot, add a grommet to the hole if necessary .

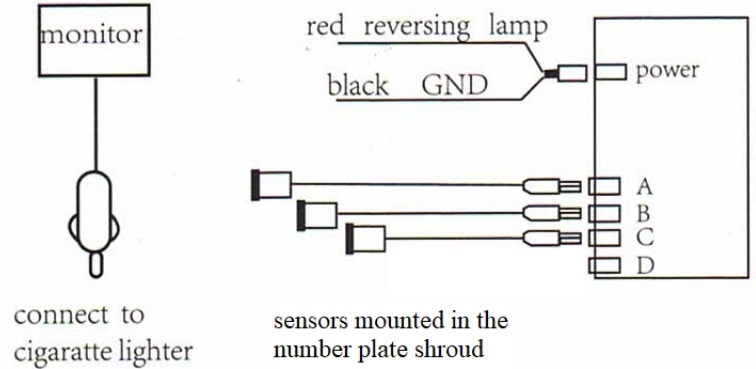
Fit the control module/black box in a waterproof, cool and dry place inside the caravan or vehicle, If fitting to a trailer it is advised to use a waterproof box to protect the black box/module.

With a working reverse bulb on the trailer or caravan both red (reverse feed) and black (earth) wires can be connected within the trailer or caravan.

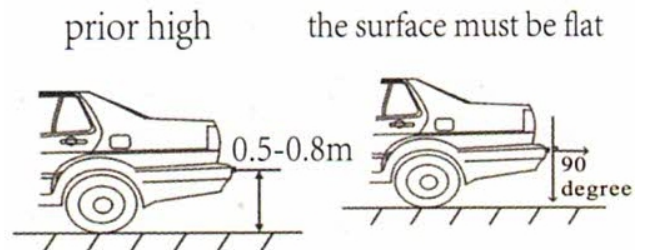
In the case of no reverse signal on the trailer a reverse light signal feed will need to be run from the vehicle for the red wire, a 13pin socket would be preferable for this for a tidy connection.

If the vehicle is reacting to the direct signal connection a single bypass relay may need to be installed on the input (eg: TF1011X).

LED/LCD wireless 3 sensors parking sensor

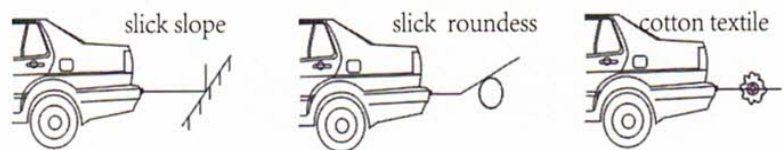


2 Sensor installation height



Sensor bar can be mounted with sensors at the top or the bottom of the number plate for height adjustment.

Sensors will have difficulty detecting the below surfaces.



1 parking sensor Parameter

voltage	9--15 DCV
rated voltage	12DCV
power cost	<0.5w
respond cost	0.3--2.0m
sensor diameter	22mm
sensor angle	x y 60°
alarm volume	65DB
work temperature	-30°C --+80°C
power (wireless)	10mw
FM(wireless)	433MH/2.4GHZ

Quality – Service – Innovation

Unit 1, Chadwick Block, Bracewell Ave Poulton-le-Fylde, Lancashire, FY6 8JF, Phone: 01253 881008 (Fax: 01253 886434)

(www.rydertowing.co.uk mail@rydertowing.co.uk)